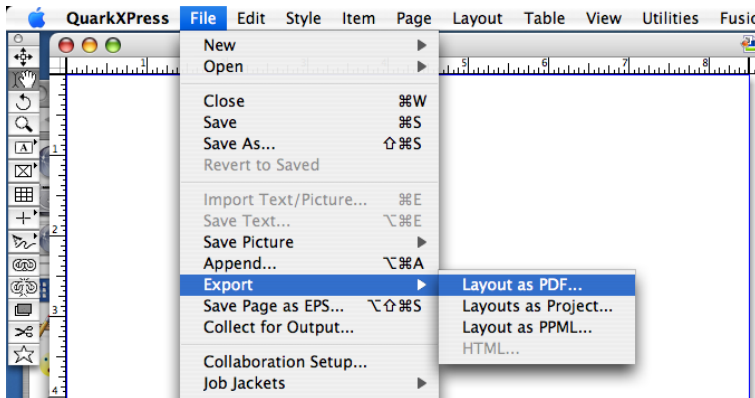
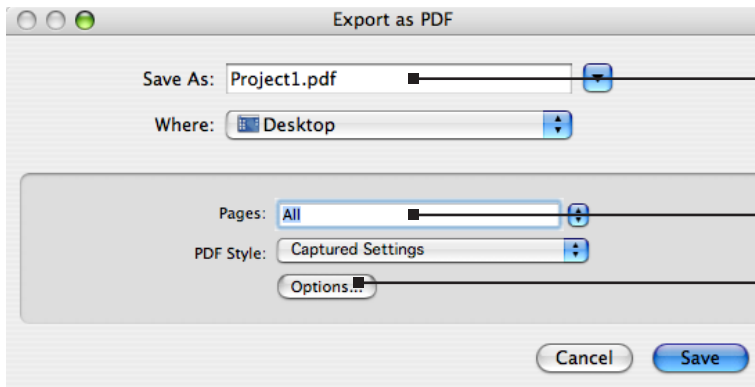


Writing a Print-Ready PDF from Quark XPress 7



Note: All imported images MUST be linked to your file. If not, they will reproduce as 72 dpi in the pdf. Check this in Utilities > Usage; Pictures. The status should be OK for all pictures.

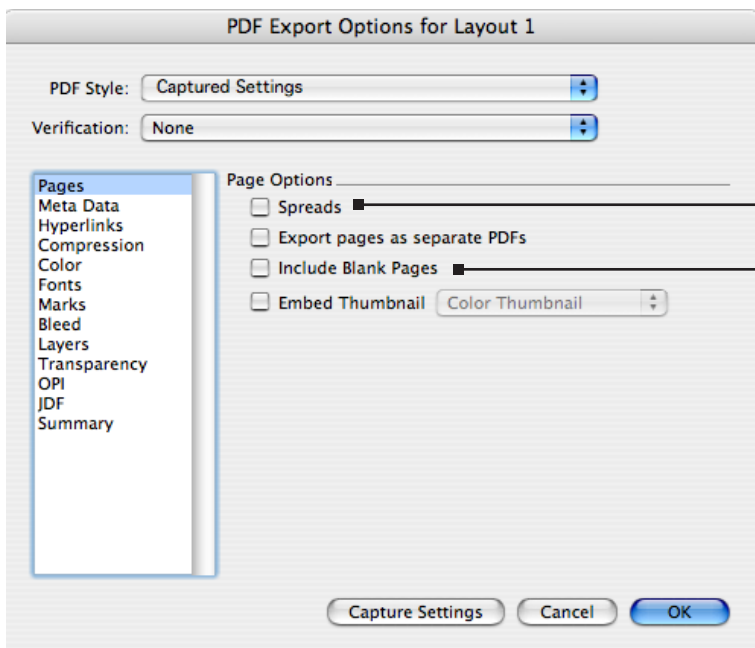
Go to the File Menu, Export > Layout as PDF. . .



Type your file name. Be sure to include the ".pdf" file extension.

Select the pages you want to write as a PDF

Click Options. . .



If your document was set up as facing pages and you need to export as a spread, check here. Otherwise, leave unchecked.

If you have blank pages that need to be included in your PDF, be sure to check this box.

PDF Export Options for Layout 1

PDF Style: Custom Settings

Verification: None

Pages
Meta Data
Hyperlinks
Compression
Color
Fonts
Marks
Bleed
Layers
Transparency
OPI
JDF
Summary

☐ Include Hyperlinks

☒ Export Lists as Hyperlinks

☒ Export Indexes as Hyperlinks

☒ Export Lists as Bookmarks

☐ Use All Lists

☐ Use List:

Appearance

Frame: Invisible Width: Thin

Highlight: None Color: Black

Style: Solid

Display: Inherit Zoom

Capture Settings Cancel OK

Hyperlinks are not needed for print. *Uncheck* Include Hyperlinks.

PDF Export Options for Layout 1

PDF Style: Custom Settings

Verification: None

Pages
Meta Data
Hyperlinks
Compression
Color
Fonts
Marks
Bleed
Layers
Transparency
OPI
JDF
Summary

Color Images

Compression: None

Resolution: Downsample to: 300 dpi

Grayscale Images

Compression: None

Resolution: Downsample to: 300 dpi

Monochrome Images

Compression: CCITT Group 4

Resolution: Downsample to: 1800 dpi

☒ Compress Text and Line Art ☐ ASCII Format

Capture Settings Cancel OK

PDF Export Options for Layout 1

PDF Style: Custom Settings

Verification: None

Pages
Meta Data
Hyperlinks
Compression
Color
Fonts
Marks
Bleed
Layers
Transparency
OPI
JDF
Summary

Color Options

Mode: Composite

Setup: As Is

Grayscale ☐

Composite RGB ☐

Composite CMYK ☐

Composite CMYK and Spot ☒

As Is ☒

Plate

☒ Cyan

☒ Magenta

☒ Yellow

☒ Black

Converts colors to greyscale when creating PDF

Converts colors to RGB. **DO NOT** use for print!

Converts colors to CMYK

Converts colors to CMYK and keeps any spot colors created

Keeps all colors in the document As Is

PDF Style: **Captured Settings**

Verification: **None**

Pages
Meta Data
Hyperlinks
Compression
Color
Fonts
Marks
Bleed
Layers
Transparency
OPI
JDF
Summary

Font Options

☒ Select All

Download	Font
<input checked="" type="checkbox"/>	Times
<input checked="" type="checkbox"/>	Helvetica

PDF Style: **Custom Settings**

Verification: **None**

Pages
Meta Data
Hyperlinks
Compression
Color
Marks
Bleed
Layers
Transparency
OPI
JDF
Summary

Registration Marks Options

Mode: **Centered**

Width: 0.007"

Length: 0.333"

Offset: 0.194"

PDF Style: **Custom Settings**

Verification: **None**

Pages
Meta Data
Hyperlinks
Compression
Color
Fonts
Marks
Bleed
Layers
Transparency
OPI
JDF
Summary

Bleed Options

Bleed Type: **Symmetric**

Amount: 0.125" Left: 0" Bottom: 0" Right: 0"

☐ Clip at Bleed Edge

PDF Style: **Custom Settings**

Verification: **None**

Pages
Meta Data
Hyperlinks
Compression
Color
Fonts
Marks
Layers
Transparency
OPI
JDF
Summary

Layer Options

☒ Select All ☐ Apply to Layout

Print	Name
<input checked="" type="checkbox"/>	Default

Plates used on selected Layer:

No selection

PDF Style: **Custom Settings**

Verification: **None**

Pages
Meta Data
Hyperlinks
Compression
Color
Fonts
Marks
Bleed
Layers
Transparency
OPI
JDF
Summary

Transparency Rendering Options

Item	Resolution
Vector Images	300 dpi
Blends	300 dpi
Drop Shadows	300 dpi

☐ Upsample Rotations

To 300 dpi for images less than 200 dpi

PDF Style: **Custom Settings**

Verification: **None**

Pages
Meta Data
Hyperlinks
Compression
Color
Fonts
Marks
Bleed
Layers
Transparency
OPI
JDF
Summary

OPI Options

☐ OPI Active

TIFF Options

☒ Include Images

☐ Low Resolution

EPS Options

☒ Include Images

Capture Settings Cancel OK

To save these settings for future use, click the Capture Settings button and name the new settings.

Example: PDF for Print

New PDF Output Style

Name: **PDF for Print**

Cancel OK

The next time you create a PDF, just choose PDF for Print from the drop down menu.

PDF Export Options for Ladd invite 2.qxd

PDF Style: **PDF for Print**

Verification: **None**

Pages
Meta Data
Hyperlinks
Compression
Color
Fonts
Marks
Bleed
Layers
Transparency
OPI
JDF
Summary

OPI Options

☐ OPI Active

TIFF Options

☒ Include Images